

SULZER

Massblatt XFP 101G-CB1 Nassinstallation
 Dimension sheet WET-WELL Installation
 Dimensioni Installazione sommersa
 Hoja de dimensiones instalación sumergida
 Plan d'encombrement Installation noyee

No: AN-M.22.586 - 04
 Drawn: 05/08/10 D.Wheeler
 Issue Date: 09/05/2013
 Änderungen vorbehalten
 Technical changes reserved
 Con riserva di modifiche
 Con reserva de modificaciones
 Sous réserve de modification

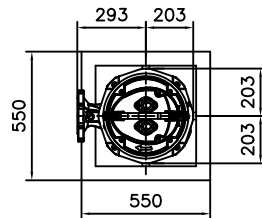
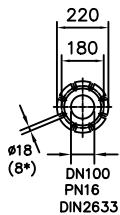
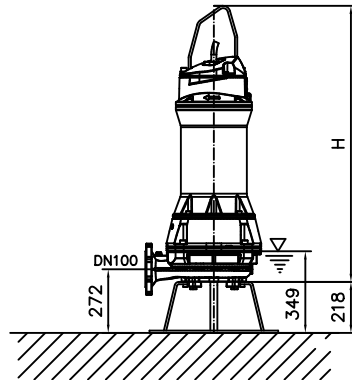
50 Hz**S.I.**

Typ Type Tipo	Gewicht Weight Poids N.C.J. (kg)	Gewicht Weight Poids W.C.J. (kg)	Height H (mm)
PE 150/2	342	382	1180
PE 185/2	342	382	1180
PE 250/2	362	402	1180

60 Hz

Typ Type Tipo	Gewicht Weight Poids N.C.J. (kg)	Gewicht Weight Poids W.C.J. (kg)	Height H (mm)
PE 185/2	356	402	1180
PE 200/2	352	396	1180
PE 230/2	366	412	1180
PE 300/2	376	426	1180

N.C.J. = No Cooling Jacket
 W.C.J. = With Cooling Jacket



Gewicht: Behälter, Pumpe, Bodenstützgestell und Kabel (50Hz = 10m; 60Hz = 15m)
 Weight: Includes pump, skirtbase and cable (50Hz = 10m; 60Hz = 15m)
 Peso: Incluye bomba, base soporte y cable (50Hz = 10m; 60Hz = 15m)
 Peso: Incluye: pompa, base d'appoggio e cavo (50Hz = 10m; 60Hz = 15m)
 Poids: Incluant la pompe, le trepied et le câble (50Hz = 10m; 60Hz = 15m)

Üsse-Allgemeintoleranzen nach DIN1680 - GTB16
 General tolerances for castings in acc. to DIN1680-GTB16
 Tolleranze generali delle fusioni secondo DIN1680-GTB16
 Tolerancias generales para la fundición seg. de DIN1680-GTB16
 Tolérance générale de la fonderie selon DIN1680-GTB16

SULZER

Massblatt XFP 101G-CB1 Nassinstallation
 Dimension sheet WET-WELL Installation
 Dimensioni Installazione sommersa
 Hoja de dimensiones instalación sumergida
 Plan d'encombrement Installation noyee

No: AN-M.22.586 - 04
 Drawn: 05/08/10 D.Wheeler
 Issue Date: 09/05/2013
 Änderungen vorbehalten
 Technical changes reserved
 Con riserva di modifiche
 Con reserva de modificaciones
 Sous réserve de modification

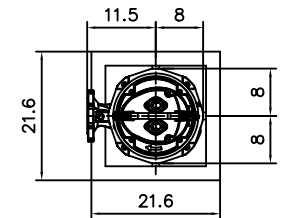
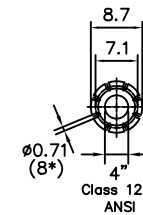
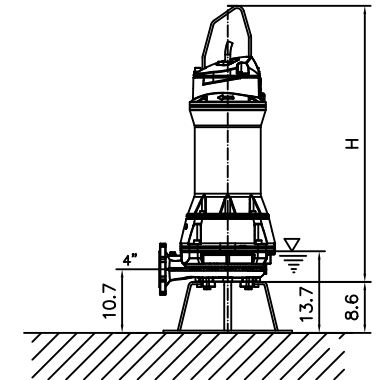
50 Hz**U.S.**

Typ Type Tipo	Gewicht Weight Poids N.C.J. (lbs)	Gewicht Weight Poids W.C.J. (lbs)	Height H (")
PE 150/2	754	843	46.5
PE 185/2	754	843	46.5
PE 250/2	799	887	46.5

60 Hz

Typ Type Tipo	Gewicht Weight Poids N.C.J. (lbs)	Gewicht Weight Poids W.C.J. (lbs)	Height H (")
PE 185/2	785	887	46.5
PE 200/2	777	873	46.5
PE 230/2	807	909	46.5
PE 300/2	829	939	46.5

N.C.J. = No Cooling Jacket
 W.C.J. = With Cooling Jacket



Gewicht: Behälter, Pumpe, Bodenstützgestell und Kabel (50Hz = 10m; 60Hz = 15m)
 Weight: Includes pump, skirtbase and cable (50Hz = 10m; 60Hz = 15m)
 Peso: Incluye bomba, base soporte y cable (50Hz = 10m; 60Hz = 15m)
 Peso: Incluye: pompa, base d'appoggio e cavo (50Hz = 10m; 60Hz = 15m)
 Poids: Incluant la pompe, le trepied et le câble (50Hz = 10m; 60Hz = 15m)

Üsse-Allgemeintoleranzen nach DIN1680 - GTB16
 General tolerances for castings in acc. to DIN1680-GTB16
 Tolleranze generali delle fusioni secondo DIN1680-GTB16
 Tolerancias generales para la fundición seg. de DIN1680-GTB16
 Tolérance générale de la fonderie selon DIN1680-GTB16